

  
Le Mieux  
PROFESSIONAL

# PLATINUM PRO

Reprogram, Reset, Regenerate



# Skin Remodeling 101

## 1. **REPROGRAM** YOUR SKIN

SIGNALING PEPTIDES & GROWTH FACTORS

## 2. **RESET** YOUR SKINCARE ROUTINE

SKIN-BRIGHTENING GALACTOMYCES FERMENT FILTRATE

## 3. **REGENERATE & REVITALIZE**

ACCELERATE SKIN RECOVERY & BOOST BLOOD CIRCULATION”





# Pro-Exclusive Skincare

These limited-edition retail products are available only to estheticians, featuring groundbreaking formulations with innovative and proprietary molecules.

These science-driven concentrated formulas are designed to work with skin's own cellular systems to delay visible signs of aging by minimizing expression lines.

Galactomyces ferment filtrate (GFF), 10 forms of hyaluronic acid, and specially treated rice bran water work together to reduce the production of melanin and prevent early onset of hyperpigmentation.





# Reasons to Believe



## BASE MATTERS

Science-driven formulas feature **Hya10+ Complex**, a multi-functional base with 10 forms of hyaluronic acid, boosted by a powerful bioferment (GFF) to enhance hydration, replenish nutrients, and support recovery.



## INNOVATION

Le Mieux leads the industry with innovative active ingredients and proprietary peptides that mimic natural **growth factors** and their signaling functions to promote skin health and renewal.



## NO DILUTION

Le Mieux offers a wide range of concentrated serums tailored to every skin signature and season, featuring **high-performance** actives with targeted delivery.



## IN-HOUSE LAB

Formula development, testing, manufacturing, and QC are conducted at our facility in **Los Angeles, California**, ensuring oversight of all stages in the production process. We do not use contract manufacturers or private label formulas.

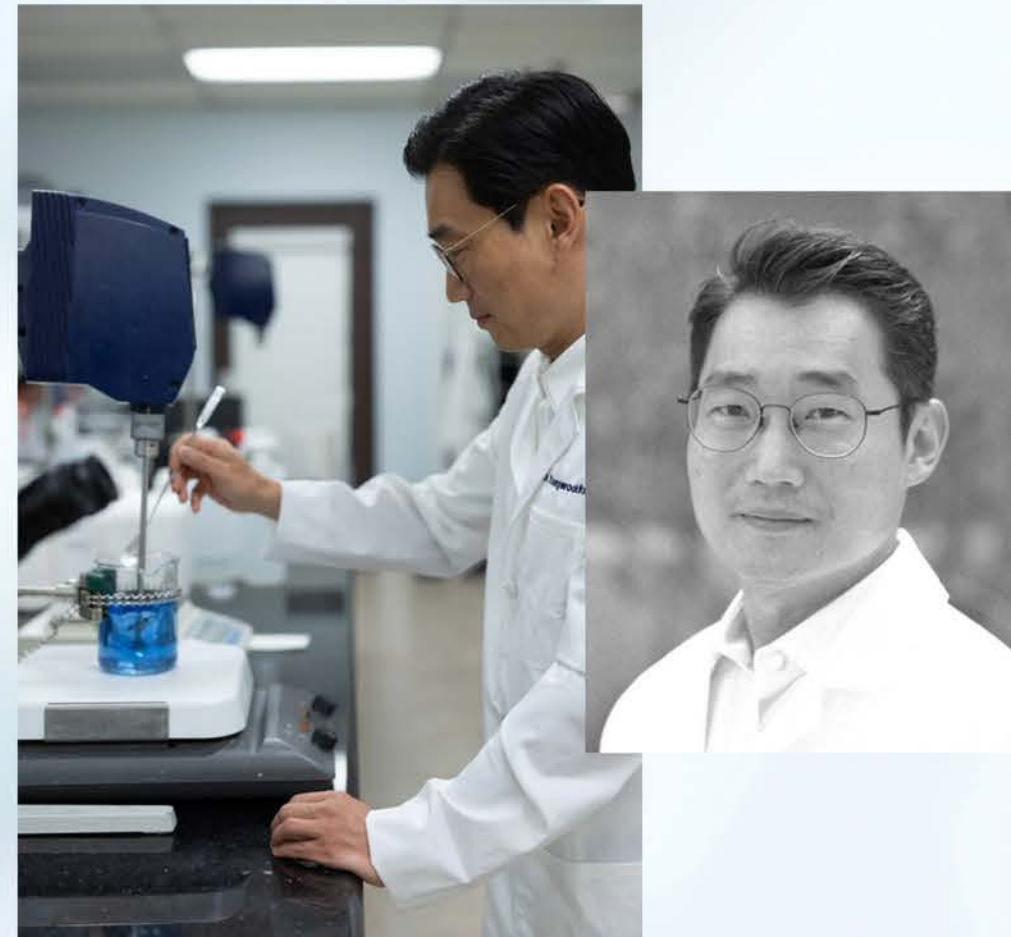


# Our Partners

Leading peptide and growth factor technology,  
pioneered by expert drug delivery researchers



David A. Bull, M.D.  
Peptide Research & Development



Young-Wook Won, PhD  
Peptide Research & Development





Skin cells contain...  
*60-70% Water*

19.5 Million Cells  
PER SQUARE INCH OF SKIN

Water 60-70%

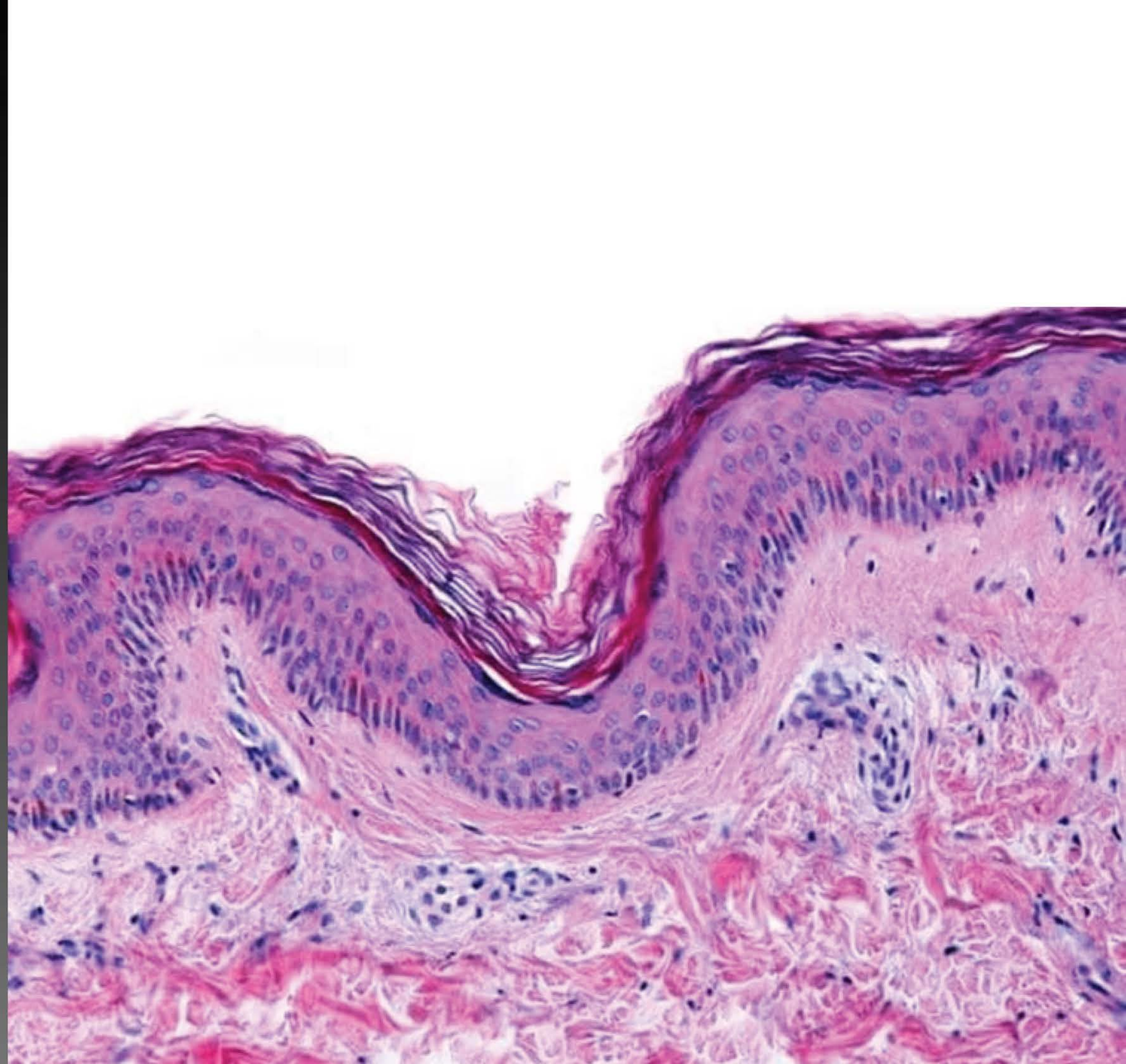
Lipids 2%

Protein 25.5%

Mineral 0.05%

Trace 0.2%

How do we mimic skin?





NEW INGREDIENT SPOTLIGHT

# Hya10+ Complex

These concentrated formulas feature Hya10+ Complex, a multi-functional biocellular base designed to work with skin's natural systems for superior hydration, nourishment, and recovery.

10 FORMS OF  
*Hyaluronic Acid*

+

*Galactomyces  
Ferment Filtrate*



# Base Matters

## EVERY INGREDIENT COUNTS

Skincare should prioritize active, functional ingredients over dilution with water and fillers, which are commonly found in many water-based formulations.

Our proprietary molecular system, Hya10+ Complex with GFF, serves as the base of all Platinum Pro products.

Hya10+ Complex helps active ingredients work more effectively, *boosting the results* of your skincare.



# 10 FORMS OF *Hyaluronic Acid*

An intelligent, potent molecular blend of 10 different forms of hyaluronic acid provides superior hydration and maximizes skin benefits.

💧 **Low molecular weight** hyaluronic acid targets deeper skin layers.

💧💧 **Medium molecular weight** hyaluronic acid provides a balance between surface and deeper hydration.

💧💧💧 **High molecular weight** hyaluronic acid are the largest molecules, targeting the epidermal layer for immediate hydration.

\*Detailed information on 10 HA molecules is available upon request



# Fermentation in Skincare

Fermentation helps break down large molecules of active ingredients for more efficient skin absorption.

Fermentation helps lower the risk of skin irritation, supports the skin barrier, and provides free radical defense against oxidative stress.





BRIGHTEN, STRENGTHEN, FIRM

# Galactomyces Ferment Filtrate (GFF)

Powerful antioxidant helps  
reduce signs of aging

---

Evens out skin tone & texture

---

Brightens & minimizes discoloration

---

Boosts effectiveness of hyaluronic acid





CELL RECOVERY ACCELERATION

# Kickstart the Cell Renewal Process

The Platinum Pro Collection is formulated with up to 13 different biomimetic peptides to mimic skin's natural repair process and encourage **regeneration and renewal**.

- Carrier Peptides
- Signaling Peptides
- Biomimetic Collagen Peptides
- Enzyme Inhibitor Peptides
- Neurotransmitter Peptides
- Copper Peptides
- Growth Factor Peptides



PROPRIETARY PATENT-PENDING MOLECULES

## Oligopeptide-225 (TGF)

TGF is considered "preventative," as this "Collagen Protector" helps prevent collagen breakdown and protect existing collagen. TGF triggers signals to change skin cellular behavior during the aging process.

## Oligopeptide-223 (EGF)

EGF is considered "reparative" or "regenerative," as this "Signaling Youth Molecule" helps reverse existing skin damage by encouraging collagen production and accelerating skin renewal. The molecular weight is less than 500 daltons.







---

**YOUTH DROPS**  
DAYTIME FIRMING SERUM

---

## Skin-Fortifying Daytime Serum

Visibly tightens, firms, counteracts signs of environmental stress, and enhances skin resilience.

### KEY INGREDIENTS

### 13 BIOACTIVE PEPTIDES

<b>Sh-oligopeptide-1</b>	Mimics epidermal growth factor (EGF) for skin recovery & renewal. 53 amino acid, cell-signaling molecules target thinning & sagging skin
<b>Niacinamide</b>	Brightens, reduces appearance of redness & discoloration
<b>Poria Cocos Mushroom Extract</b>	Increases HA production, provides superior hydration, strengthens skin barrier, eases inflammation & reduces redness & fine lines





---

**DREAM DROPS**  
OVERNIGHT CORRECTIVE SERUM

---

## Skin-Resetting Nighttime Serum

Works overnight to reduce inflammation and correct signs of aging, optimizing skin's natural recovery and renewal.

### KEY INGREDIENTS

### 6 PEPTIDES

**Ceramides AS, AP,  
EOP, NS, NP**

Skin-identical ceramides moisturize & help protect against water loss & dryness

**Dipeptide  
Diaminobutyroyl  
Benzylamide Diacetate**

Anti-wrinkle neuropeptides mimics neurotransmitter to target expression lines & wrinkles

**Ectoin**

Helps inhibit inflammation & wards off oxidative damage from extreme weather conditions





---

## BEAUTY RESET

### FLASH FIRING CONCENTRATE

---

# Instant Topical Filler

Remodeling serum rapidly smooths the look of wrinkles and tightens skin for a quick lift and youthful glow.

## KEY INGREDIENTS

## 12 BIOACTIVE PEPTIDES

### Oligopeptide-223

Supports skin renewal, boosting elasticity, smoothness, and overall firmness

### Tranexamic Acid

Reduces dark spots & discoloration, evens out skin tone & enhances brightness

### Sorghum Bicolor Stalk Juice

Provides an instant tightening effect to smooth skin and promote a lifted appearance





---

**EYE WONDER**

YOUTH CONTOUR EYE CREAM

---

## Featherlight Eye Cream

Rapidly smooths the look of wrinkles and tightens skin for a quick lift and youthful glow.

### KEY INGREDIENTS

### 14 BIOACTIVE PEPTIDES

**Darutoside**

Helps reduce puffiness, smooth fine lines & strengthen skin barrier

**Sh-polypeptide-11**

Bio-identical peptide mimics fibroblast growth factor (FGF) to promote collagen synthesis

**Persian Silk  
Tree Bark**

Helps tighten eye areas, lift, firm & minimize dark circles & puffiness

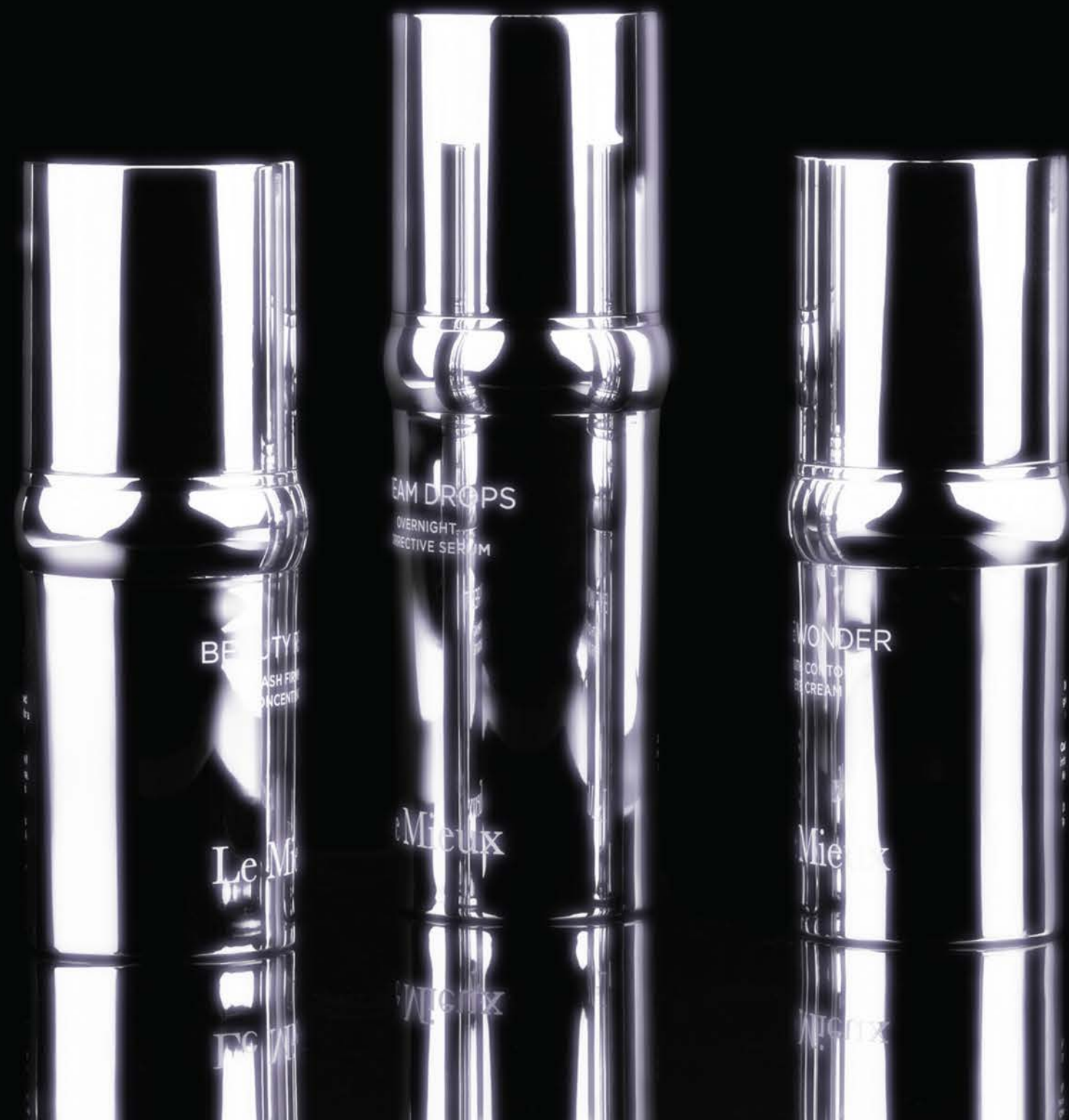


# PLATINUM PRO PROTOCOLS

Platinum Youth  
Contour Restore  
Protocol



Eye Wonder  
Instant Eyelift  
Protocol





# PLATINUM PRO

MARKETING LIBRARY

Download Now

